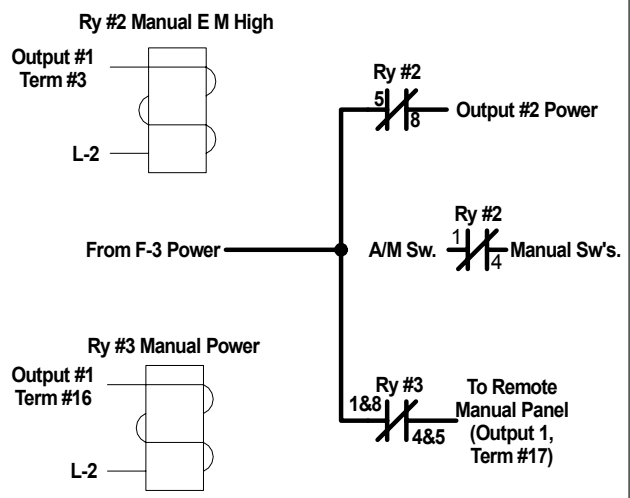
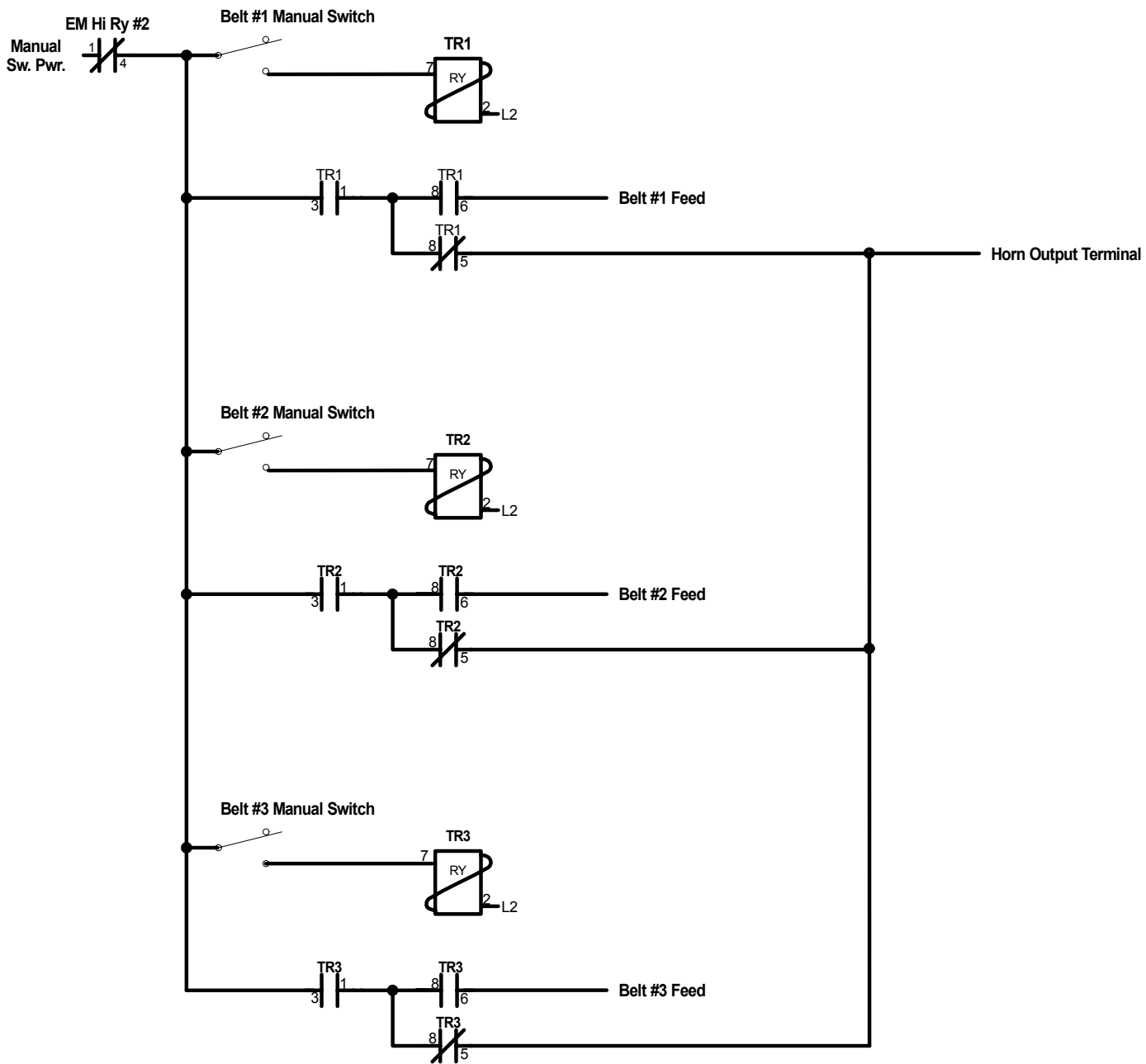
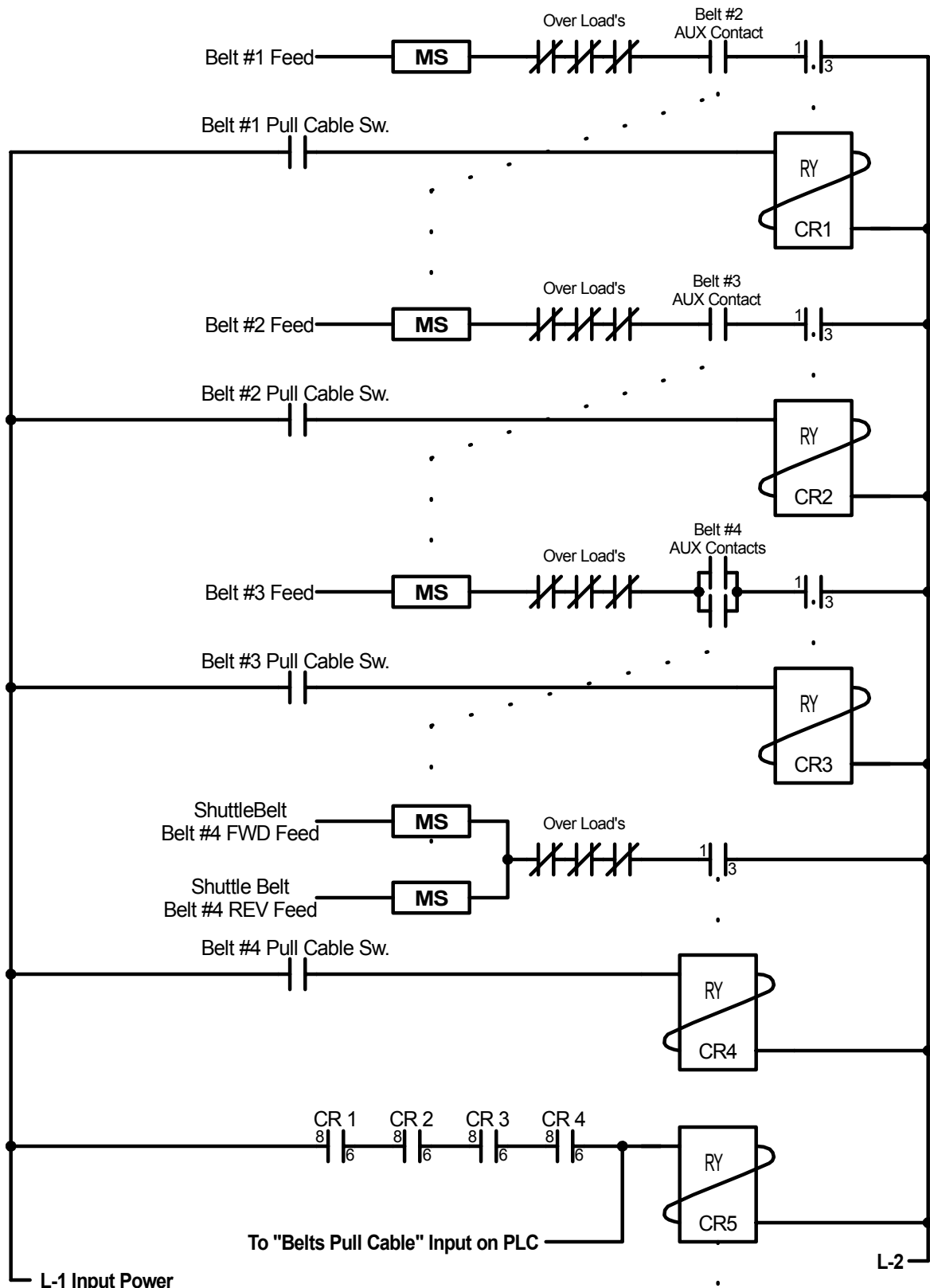


Plug in MOV Module.

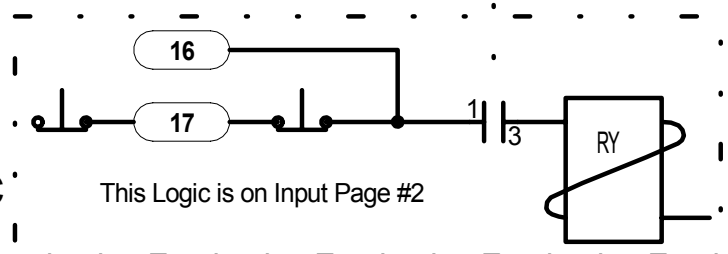






L-1 Input Power

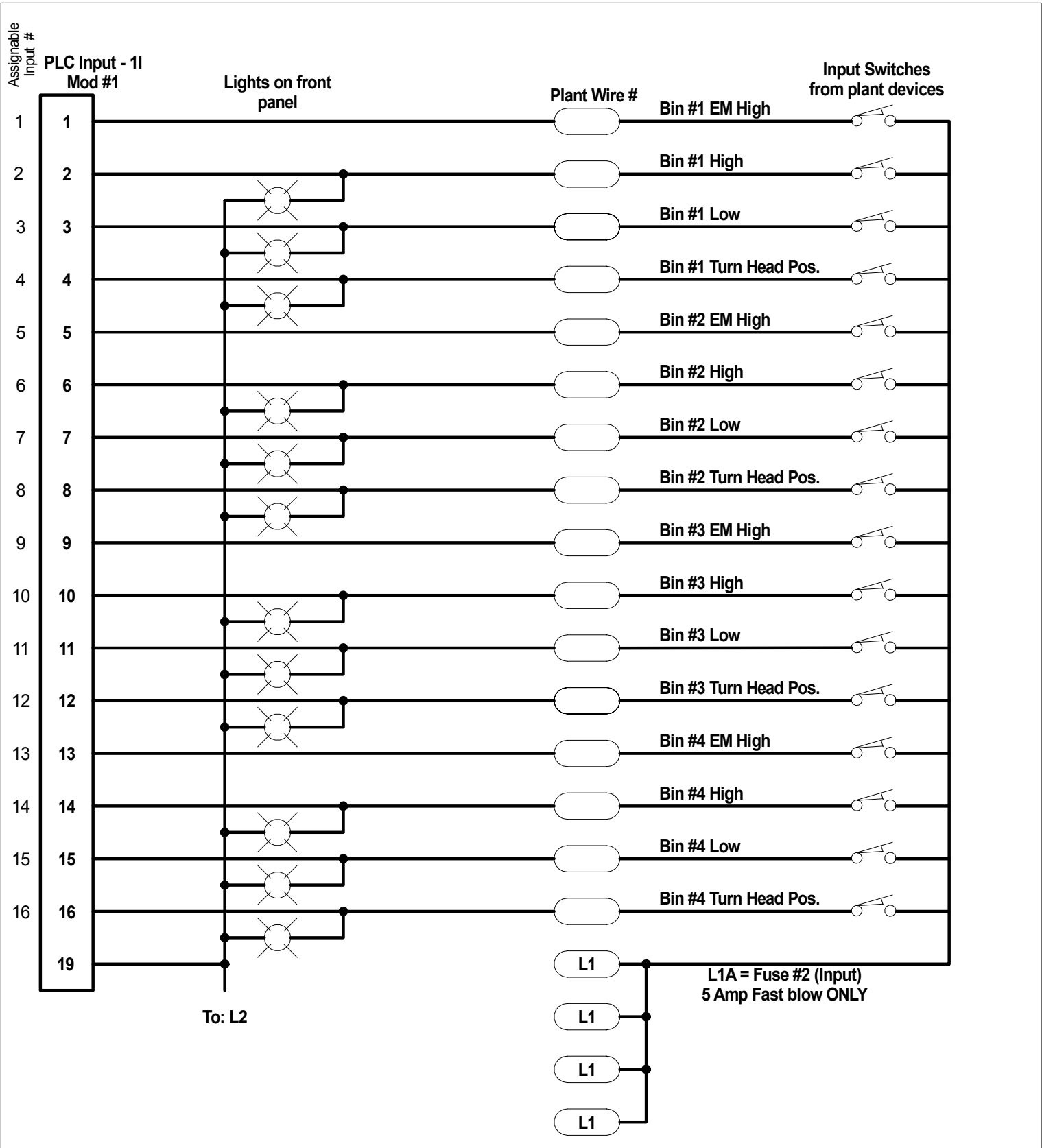
L-2



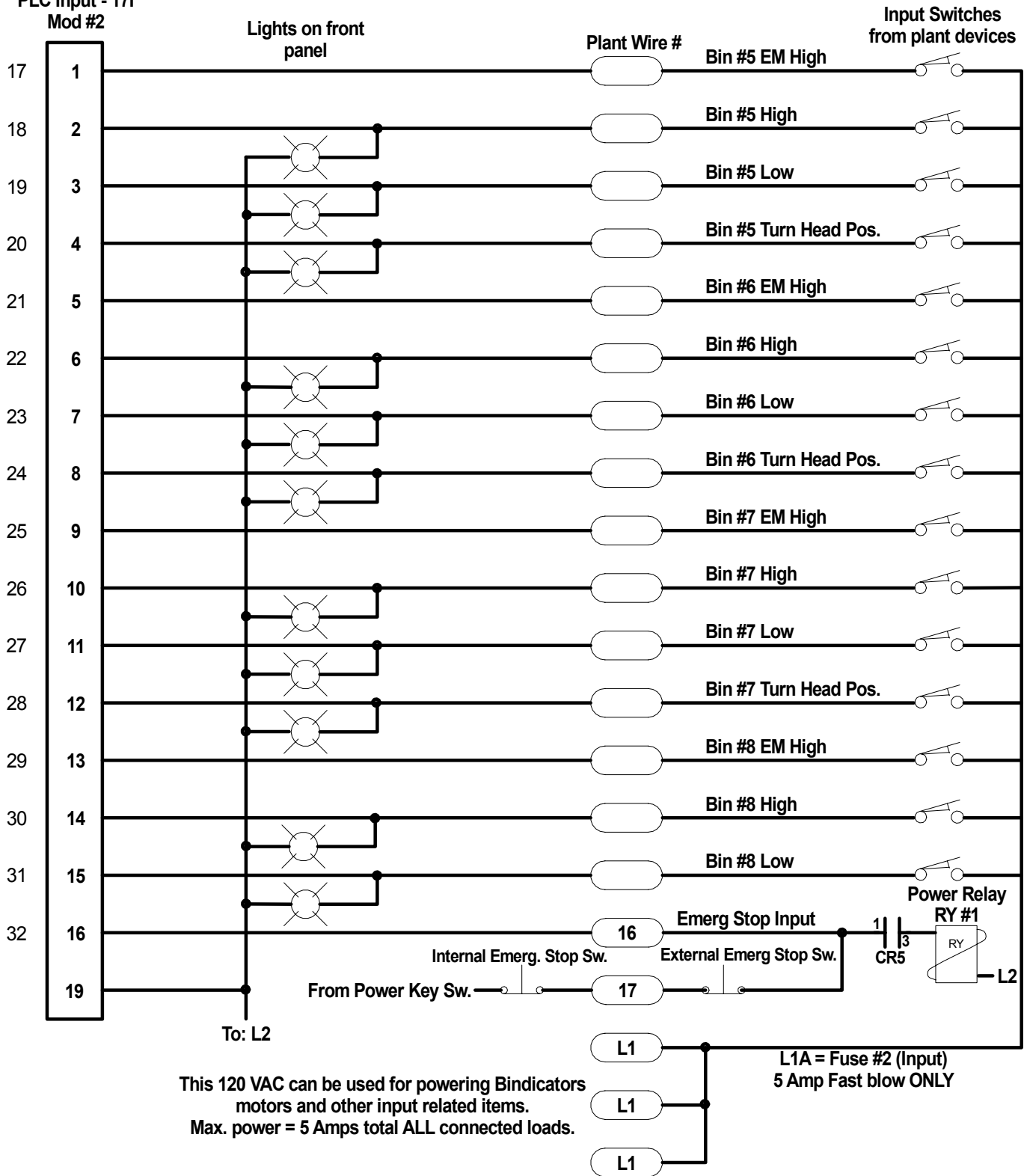
This Logic is on Input Page #2

J.H.M.C. Robotics, Inc
 Plant wiring Diagrams.
 Cable Pull Logic Date: 04/16/2006

NOTE: All Belt Pull cable switches are to BREAK contact when pulled.

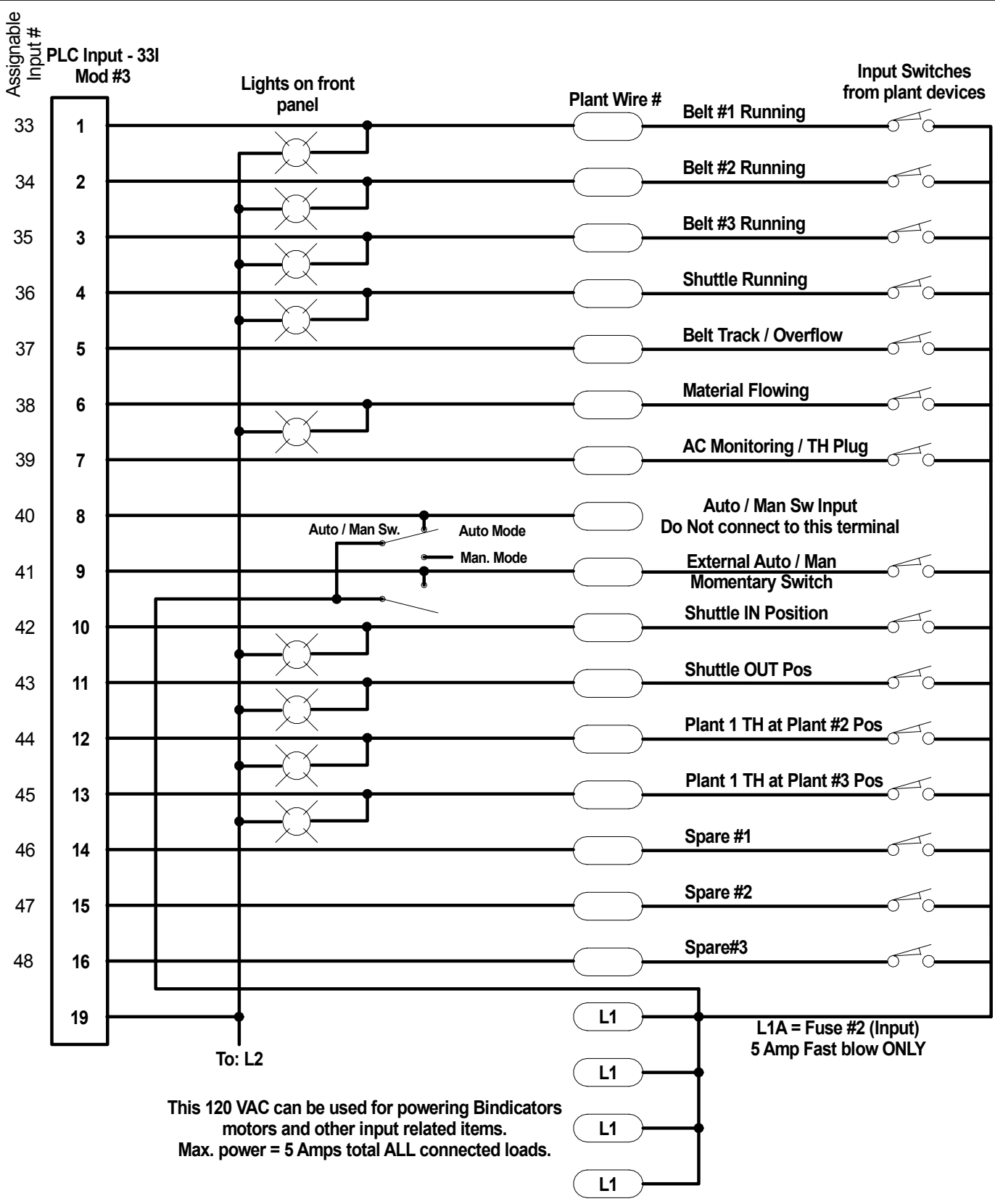


PLC Input - 171
Mod #2



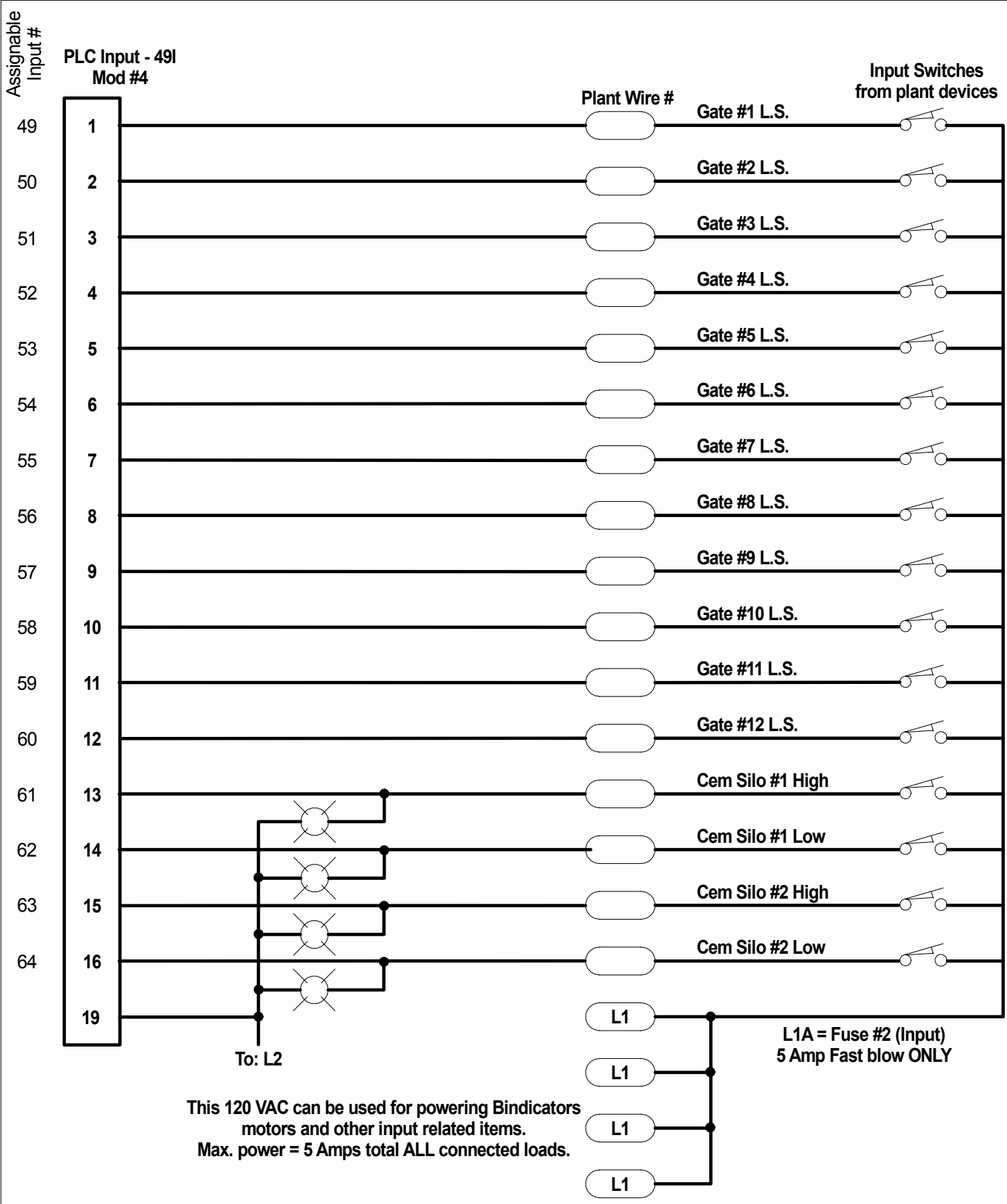
J.H.M.C. Robotics, Inc

SIERRA 1 plant wiring Diagrams. Date: 04/16/2006



J.H.M.C. Robotics, Inc

SIERRA 1 plant wiring Diagrams. Date: 03/08/2006



J.H.M.C. Robotics, Inc

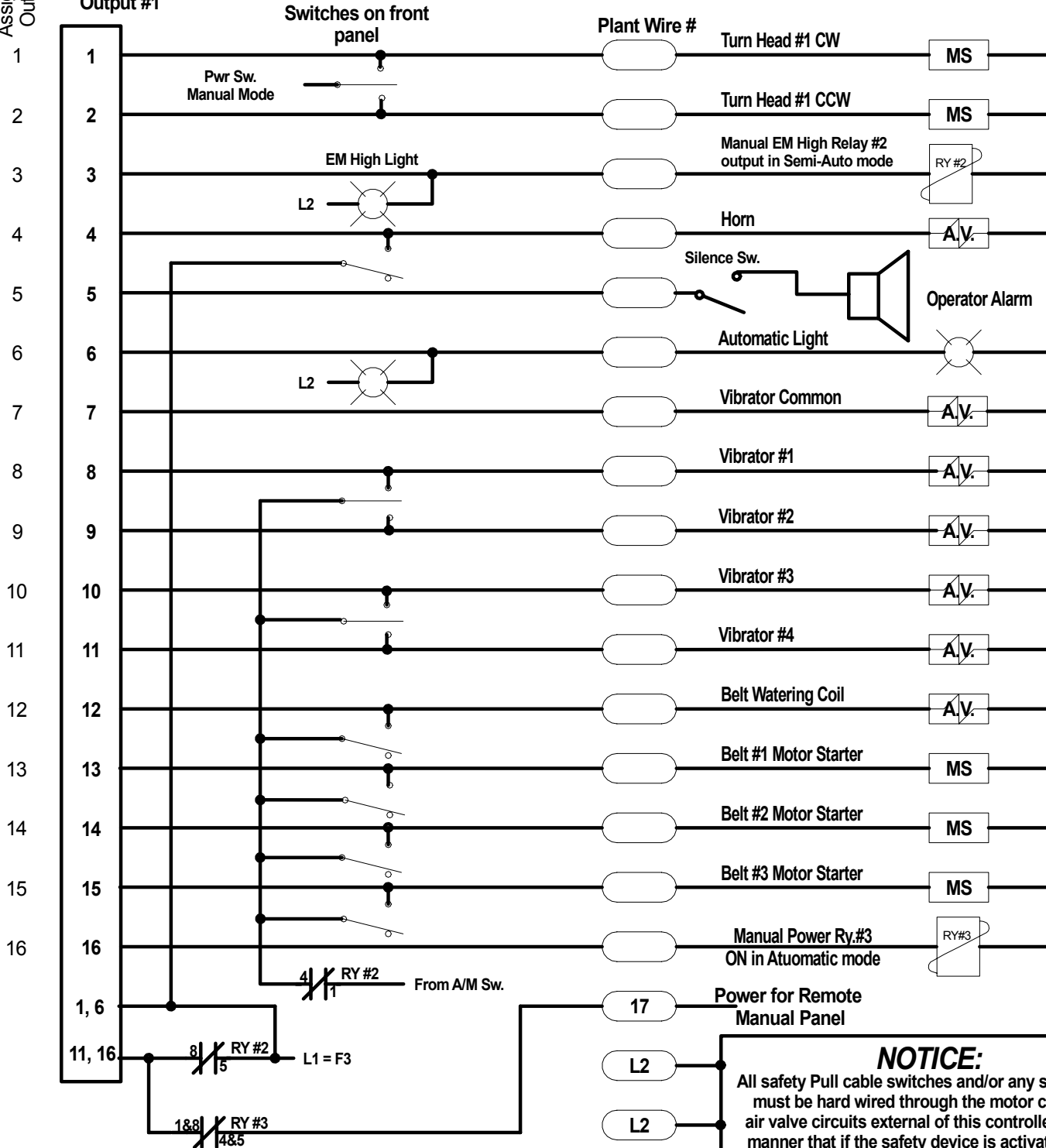
SIERRA 1 plant wiring Diagrams. Date: 03/08/2006

Assignable Output #

PLC Module - 1Q
Output #1

OUTPUT Terminal #1

All AV (air valve) outputs rated at 1 amp.
All MS (motor starter) outputs rated at 1 amps
Total output max load at one time is 5 Amps.



MS = Motor Starter AND Safety devices
A.V. = Air Valves AND Safety Devices

NOTICE:

All safety Pull cable switches and/or any safety device must be hard wired through the motor coil and/or air valve circuits external of this controller in such a manner that if the safety device is activated and if a signal is applied from the controller to a motor or other device connected to this controller, it will not allow the item to function.

If the turnhead / Shuttle Belt is reversible, travel limit switches must be installed at each end of the turnhead / Shuttle travel and hard wired through the motor coil circuits external of this controller in such a manner that if a signal is applied from the controller to the turnhead / Shuttle Belt it will not allow the turnhead / Shuttle Belt to function beyond the turnhead / Shuttle Belt travel limits in either direction.

J.H.M.C. Robotics, Inc

SIERRA 1 plant wiring Diagrams. Date: 03/08/2006

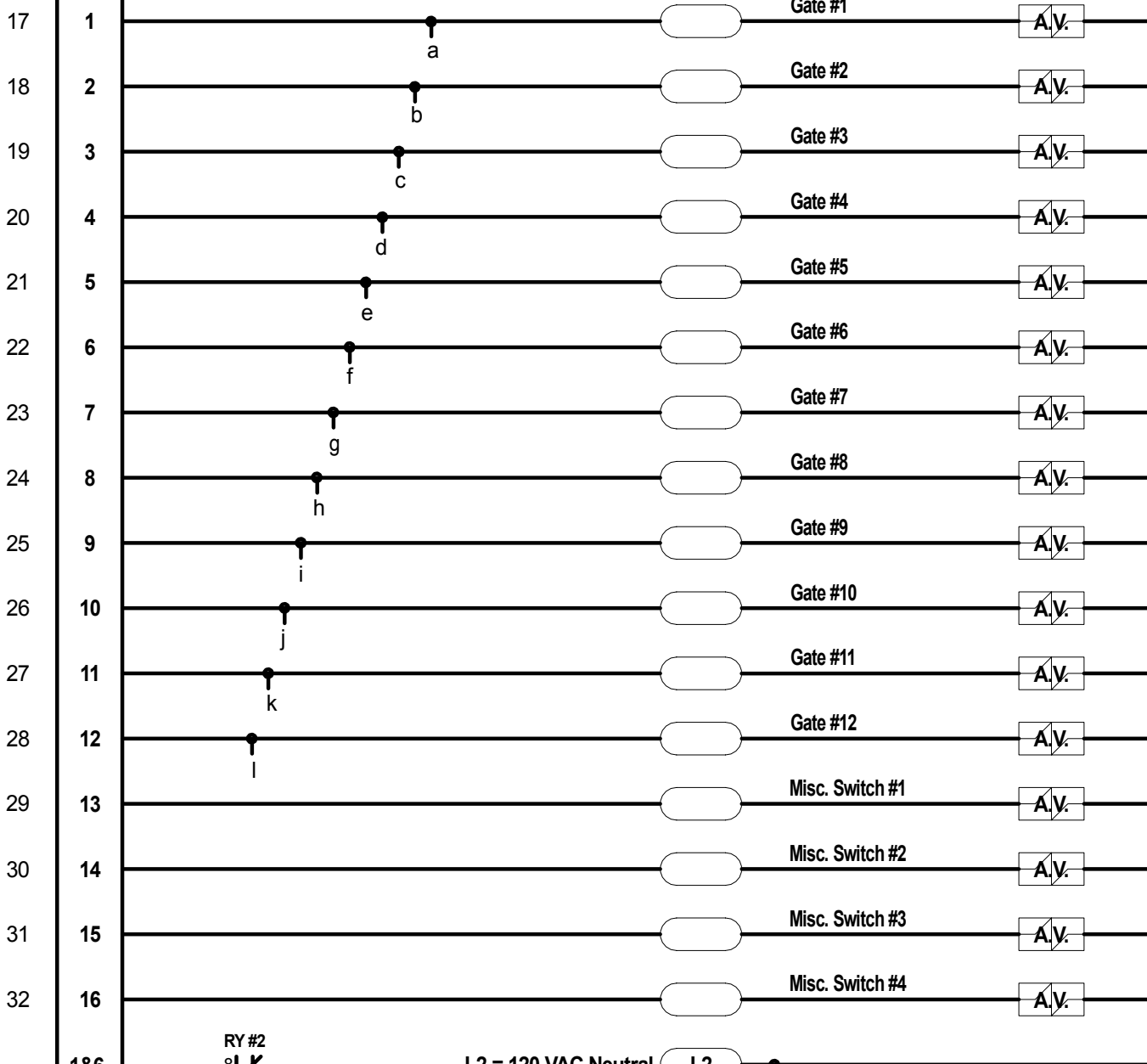
Assignable Output #

OUTPUT Terminal #2

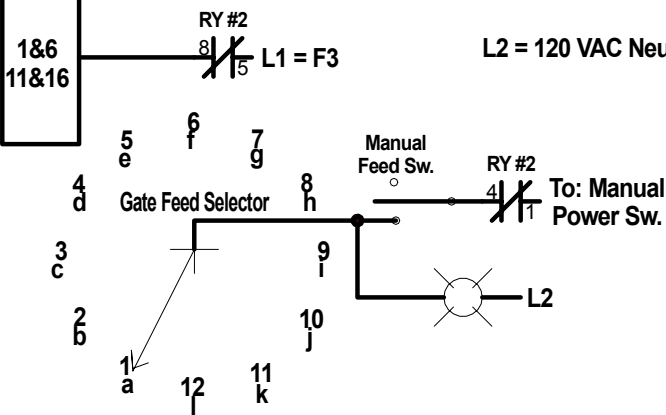
All AV (air valve) outputs rated at 1 amp.
 All MS (motor starter) outputs rated at 1 amps
 Total output max load at one time is 5 Amps.

PLC Module - 17Q
 Output #2

Plant Wire #



MS = Motor Starter AND Safety devices
 A.V. = Air Valves AND Safety Devices



NOTICE:

All safety Pull cable switches and/or any safety device must be hard wired through the motor coil and/or air valve circuits external of this controller in such a manner that if the safety device is activated and if a signal is applied from the controller to a motor or other device connected to this controller, it will not allow the item to function.

If the turnhead / Shuttle Belt is reversible, travel limit switches must be installed at each end of the turnhead / Shuttle travel and hard wired through the motor coil circuits external of this controller in such a manner that if a signal is applied from the controller to the turnhead / Shuttle Belt it will not allow the turnhead / Shuttle Belt to function beyond the turnhead / Shuttle Belt travel limits in either direction.

J.H.M.C. Robotics, Inc.

Sierra 1 plant wiring Diagrams. Date:03/08/2006